

Edrom Lodge

c/- Kiah Post Office, Eden NSW 2551
ABN: 689 475 737 06

Phone: 02 6496 1510
www.edromlodge.com.au

Tariffs - from 12/5/2013

Social groups ... Family holidays ... Seminars ... Special interest groups

<i>Adults</i>	\$30.00 per person per night
<i>Children (to 15 years)</i>	\$20.00 per person per night

A \$900 minimum charge applies per night.
(this minimum only applies to groups of 30 or less)

A bond of **\$500** is required at time of booking. Refundable after final day inspection.

Full payment required on arrival

No Eftpos or credit card facilities.

We require a list of names of all guests (including children) on arrival.

As bookings at Edrom are regular, we must advise that arrival times cannot be earlier than 3pm and departure time cannot be later than 10am.

Please leave the lodge in the manner in which you found it.

Things to bring

- Your own bedding, including a bottom sheet even if you are using a sleeping bag.
If you do not bring a sheet, you must hire one @ \$6 per stay.
note: All beds are single bunks. Edrom Lodge sleeps 68.
- Your own towels and toiletries.
- Insect repellent.
- Lighter gas guns for BBQs and stoves.
- Dishwashing detergent and tea towels.
- Fold up chair for outside use
- A few dollar coins each for heating

Things NOT to bring

- Citronella Bamboo Burners, Candles, Incense, Mozzi Coils, etc

Due to the presence of native wildlife, pets are not allowed.

Cheers, Christine and Brian

Edrom Lodge

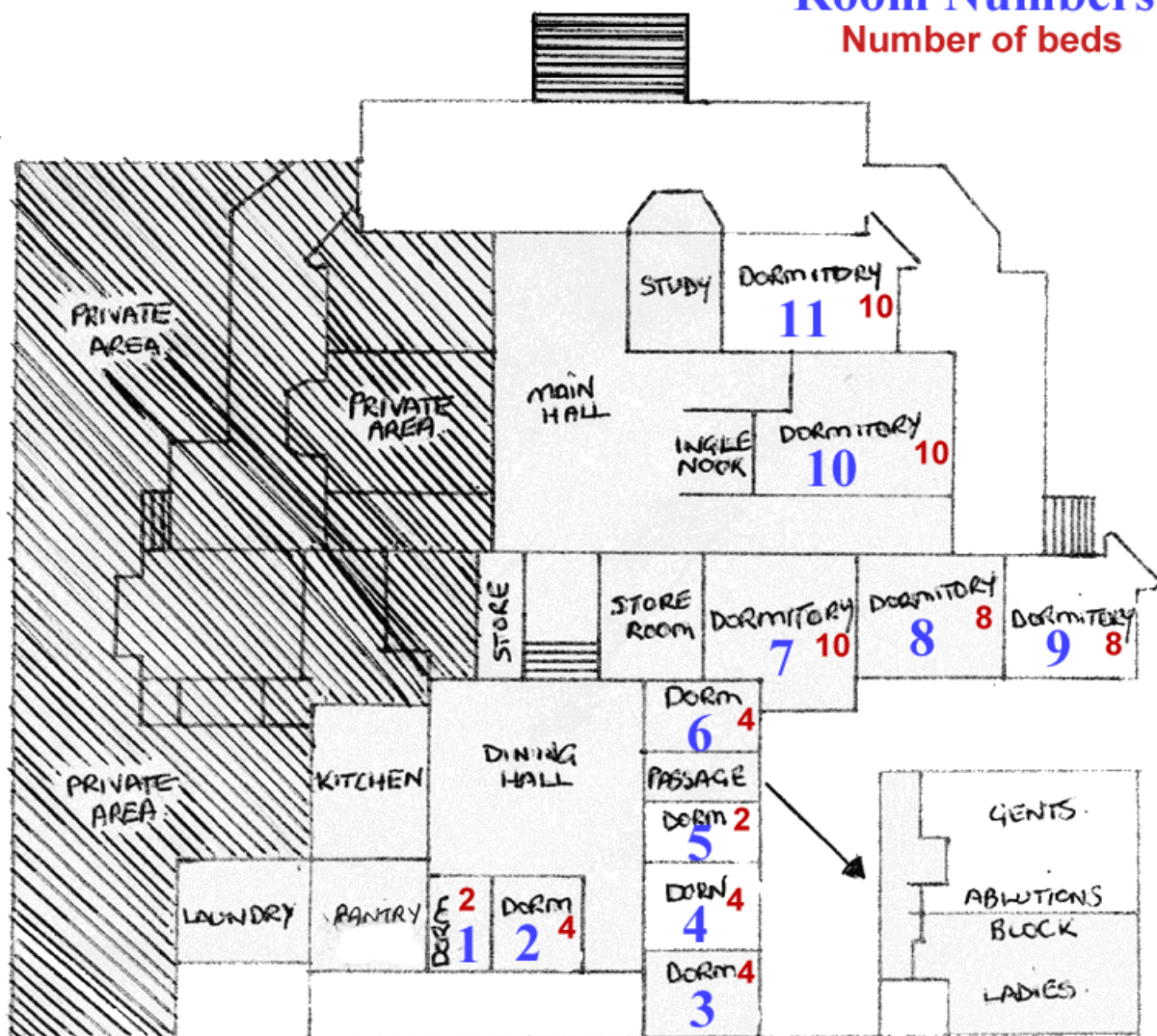
c/- Kiah Post Office, Eden NSW 2551
ABN: 689 475 737 06

Phone: 02 6496 1510
www.edromlodge.com.au

To find us: From Eden, travel south along the Princes Highway (approx. 17 km) to the Green Cape Lighthouse sign on the left. Turn off highway and continue along sealed road for another 17 km until you see the Edrom Lodge signpost on your left.

Edrom Lodge
scale 1:250

Room Numbers Number of beds



There are 68 beds.

Please note there is no vehicle access to Edrom Beach. There are boat launching facilities at Eden or at nearby Fisheries Flat (8km). Canoes and kayaks can be carried down the hill.